


Since 1995, we focus on switches

DB-8 系列电源插座

Rating:

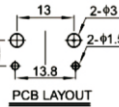
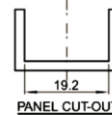
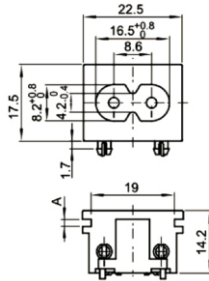
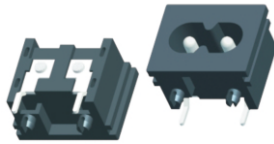
5A 250V AC T105  Approval

2.5A 250V AC  Approval

Insulation resistance: 1000MΩ(min)500V DC

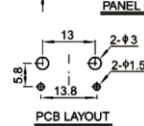
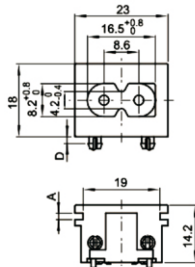
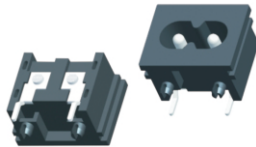
Dielectric withstand voltage: 2500V AC 5s Between terminals

DB-8-1MP2



CODE	DIMENSION
A	0.8
	1
	1.5
	2

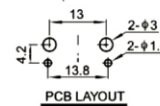
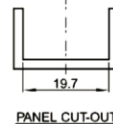
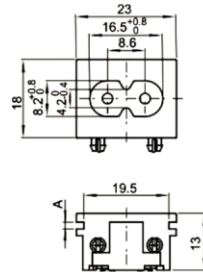
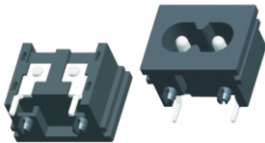
DB-8-1P2



CODE	DIMENSION	MODEL
D	Non	1V
	1.3	1W
	1.7	1

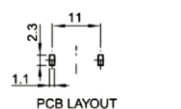
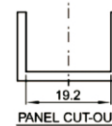
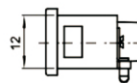
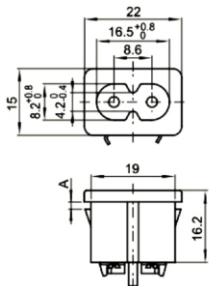
CODE	DIMENSION
A	0.8
	1
	1.5
	2

DB-8-2P2



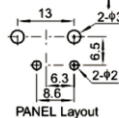
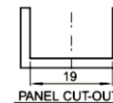
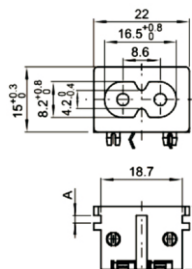
CODE	DIMENSION
A	0.8
	1
	1.5
	2

DB-8-3P10



CODE	DIMENSION
A	0.8
	1
	1.5
	2

DB-8-4P8



CODE	DIMENSION
A	0.8
	1
	1.5
	2